

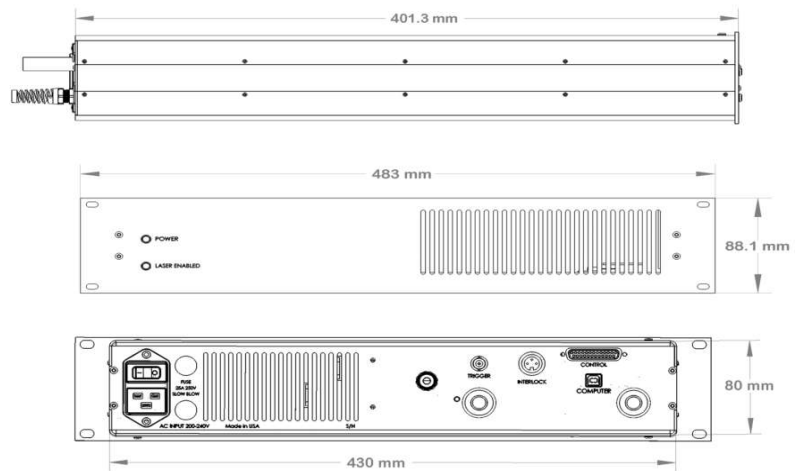
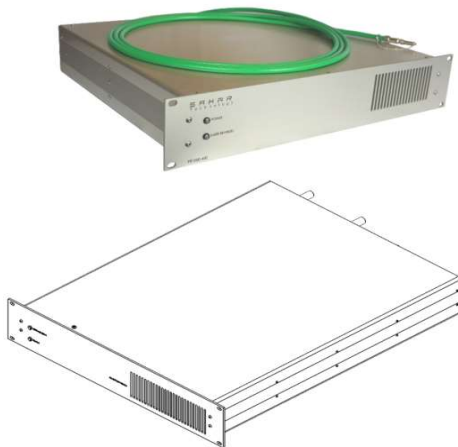
# DIRECT DIODE LASER SYSTEM

## PRODUCT SPECIFICATIONS

Model Number **ST-0500-915-600-10-5-LD80-RW1**  
Description **DIRECT DIODE 500W SPECIFICATION**

powered by **nLIGHT**

	Units	Lower Spec	Typical	Upper Spec
Optical				
CW Output Power (in fiber)	W	500	504	
Wavelength Centroid	nm	905	915	925
Spectral Width (FWHM)	nm		10	
Power Stability	%			2.5
Fiber Core	um		600	
Fiber NA / Index Type	-		0.22 NA / Step Index	
Pilot Laser	-		640nm <5mW	
Electrical				
Electrical-to-Optical Efficiency	%	40	43	
Max Modulation	kHz			1.0
Rise / Fall Time	us		200	
Supply Voltage	VAC		220	
Power Consumption	W		840	
External Interface		LAN / USB / DB25 Analog / Facility Interlock		
Mechanical				
Mass <sup>3</sup>	kg		28	
Fiber Length	m	4.9	5.0	5.1
Fiber Bend Radius (Active / Storage)	mm		115 / 100	
Fiber Jacketing	-		PVC Coated Stainless Steel	
Fiber Termination	-		LD80	
Thermal				
Water Flow Rate <sup>4</sup>	l/min	10		12
Pressure Drop	PSI			20
Ambient Air Temperature <sup>2</sup>	°C	5		35
Water Temperature <sup>5</sup>	°C	5	17	25
Outline Drawing				



ECCN: EAR99 <sup>1</sup>

### Notes

<sup>1</sup>Export Control Classification Number (ECCN) as defined by the Export Administration Regulations (EAR)

<sup>2</sup>Operating temperature defined by the water temperature and ambient temperature. Acceptable operating range is 20 - 35°C, but performance may vary

<sup>3</sup>Does not include mass of fiber

<sup>4</sup>Clean water with 100um filter

<sup>5</sup>Avoid condensation by controlling water temp at least 3°C above ambient air dew point



This Product does NOT comply with IEC 60825-1 or 21CFR1040.10/21CFR1040.11 and is to be integrated into a final system that meets with the safety regulation of the end customers respective country. It is the integrators responsibility to insure compliance before being sold to the final user.



819 SE 14th Loop, Suite 101K - Battle Ground WA 98604 USA  
www.sakartek.com - sales@sakartek.com