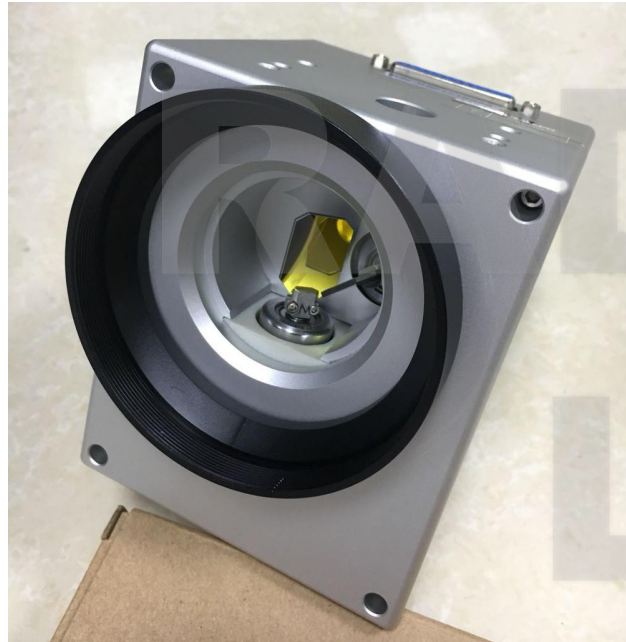


PART 1

Optical System



HIGH SPEED SINO-GALVO SCANNER

PART 2

Optical System



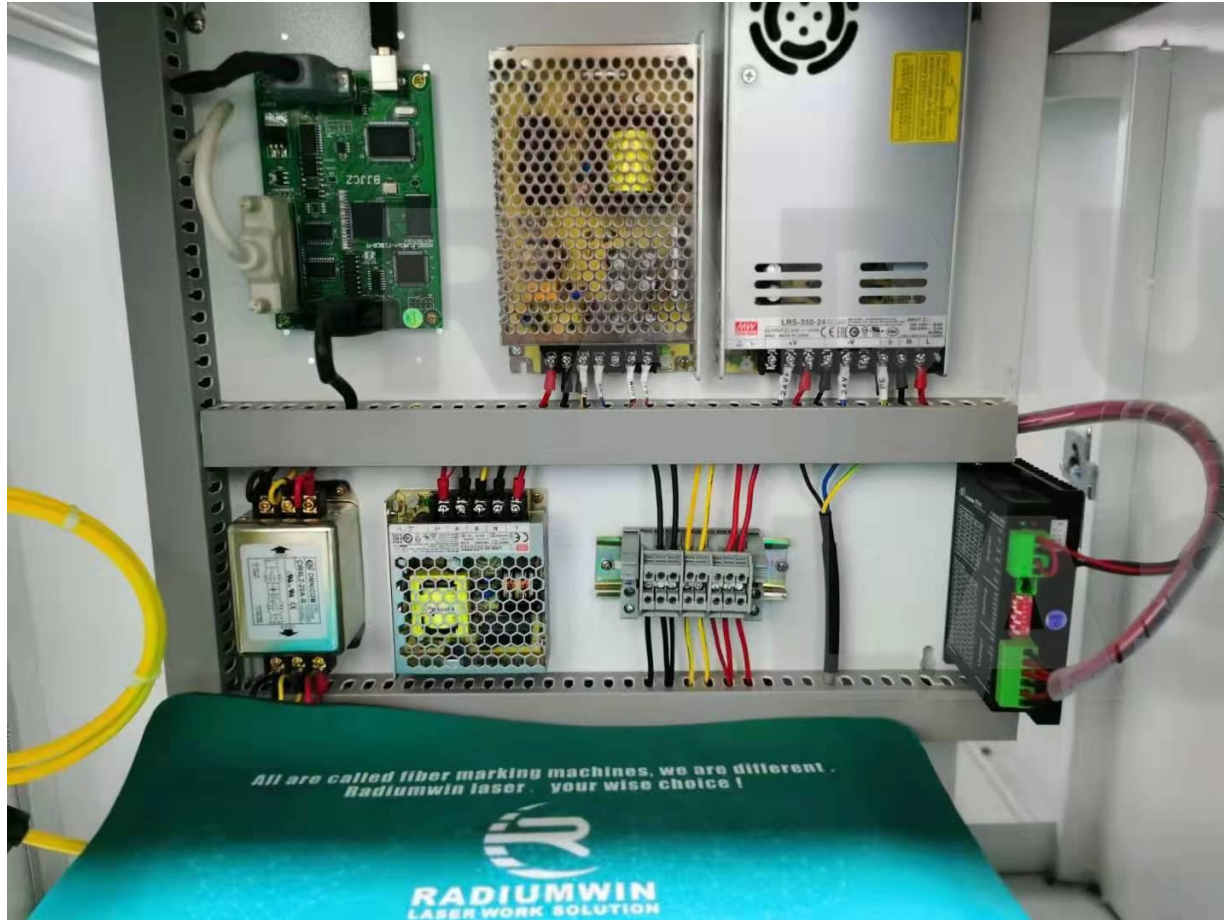
**Opex foiled lens,
Working area: 100*100mm/150*150mm/175*175mm/200*200mm/300*300mm**

PART 3

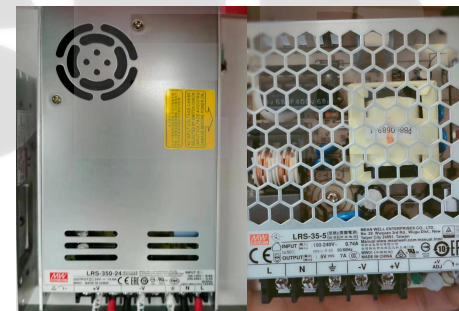


HORIZON LASER

Control System and Software



◀ **MAIN BOARD**
Beijing JCZ mainboard
EZcad software
Support 32/64 bit system



◀ **POWER SUPPLY**
Taiwan MW
24 hours Uninterrupted work

PART 4

Machine accessories-Standard



- Power line
- USB line
- Tools
- software U-disk
- Foot switch
- Glasses
- Laser adjust sheet

PART 5



Technical parameters

power:	20w/30w/50w
laser wavelength	1064nm
marking area	100*100m
optional marking area	110*110mm/150*150mm/200*200mm
marking speed	8000mm/second
minimum line width	0.012mm
minimum character	1.5mm
repeated precision	0.003mm
life-span of fiber laser module	100.000 Hours.
beam quality	m2 < 1.5
focus spot diameter	< 0.001mm
output power of laser	10%-100% continuously to be adjusted
system operation environmen	windows xp/wind7/wind8

Thanks for watching



0086-15013595903



0086-15013595903



cynthiazheng@dpxlaser.com



0086-15013595903



www.dpxlaser.com