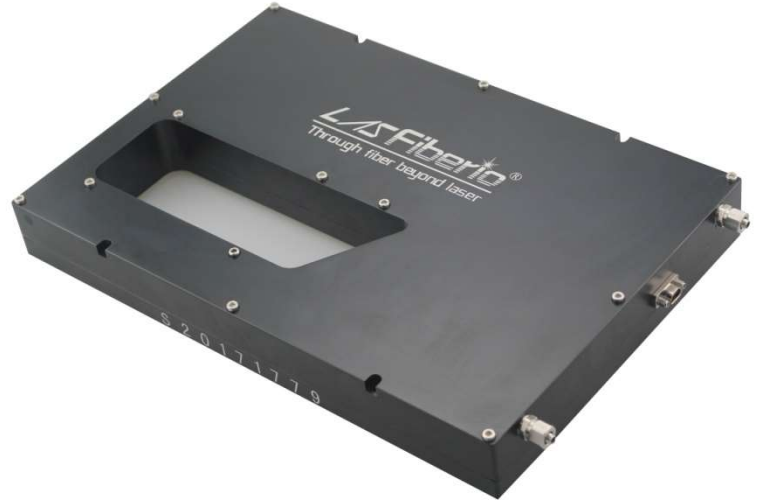


Nx1 Laser Combiner (LC)



Description:

Currently, the single fiber laser module output power goes upto few kilowatt, with semi-singlemode, for example, 1.5KW with $M^2 \sim 1.3$, even 2KW with $M^2 \sim 1.2$, for very thick metal sheet cutting applicaiton, people need combine several modules into multimode fiber to create very high power output, say 4KW, 6KW, 8KW, even 10K~15KW level. The LC combines Npcs ($N=2,3,4,7$ etc.) amplified laser(say 1080nm 1kw/leg) into one Beam Delivery fiber(say 50um or 100um core size 0.22NA), 19x1 LC is under development.

The PD for temperature and leak light detecting are available.

Features:

- Each input fiber with CPS integrated
- Output fiber is CPS integrated.
- High coupling efficiency >98%
- Endcapping, armored fiber are optional

Applications:

- Mutil-kilowatts fiber Laser

Nx1 Laser Combiner (LC)

Specifications

Laser #	Laser Fiber	Output fiber	Power/leg	Efficiency	Output M ²	Total power
3	20/400DCF	50/360 0.2NA	2kW	>97%	5-8	6KW
3	x/200	50/360 0.2NA	1.5kW	>97%	5-7	4.5KW
6	x/200	100/360 0.2NA	1.5kW	>98%	8~13	8KW
6	20/400DCF	100/360 0.2NA	2kW	>98%		12KW
7	20/400DCF	100/360 0.2NA	2kW	>98%		15KW

Remark:

- * Customization upon request, such as output bare fiber or with QBH cable output.
- * All products are with LasFiberio logo, for special request, please contact our sales .

Ordering Information:

- Please describe your laser combiner struture, like:

3x1 laser combiner +QBH combo, 20u core size as input fiber of 1500w/leg, 50u core size as output fiber, on 98% eff. When input M2<1.2, the output M2 <7. QBH in 15m armor and 2m bare fiber, totally 17m.

-- Drop us mail to sales@lasfiberio.com for further help.